

GBCI®



Excellence In Design
For Greater Efficiencies

**GBCI EDGE Auditor Call
August 2025**

AGENDA

- **GBCI EDGE Team**
- **EDGE Technical Updates**
- **Reminders – Process and Resources**
- **Frequently Asked Questions**
- **Live Q&A**

**Slides and video
link will be
shared next week**



GBCI[®]

Edge
Excellence In Design
For Greater Efficiencies

GBCI - EDGE Team



GBCI EDGE Team

GBCI EDGE Product Team

- **Dror Karni** – Sr. Product Management, EDGE
- **Kenneth Simpson** – Vice President, GBCI Certification
- **Deepak Gulati** – Director, Customer Engagement, EDGE SME

GBCI EDGE Technical and Certification Team

- **Lina Luque** – Certification Manager, EDGE, TCS, EDGE Audit of Auditor, and QC/ZC Reviewer.
- **Carissa Boissiere** – QC Reviewer, EDGE Audit of Auditor & TCS
- **Mahanand Joshi** – EDGE Project Certificates and EDGE Auditor Certificates Issuance.
- **Maria Matamoros** – QC Reviewer & EDGE Audit of Auditor
- **Melisa Apestegui** – QC Reviewer

GBCI EDGE OPS Team

- **Paige McKnight** – Project Registration/Invoicing, COI Check, General CS.
- **Stephanie Dicks** – EDGE Auditor Candidate/New Auditor Onboarding/Auditor Maintenance, QC Review Submission First POC.

GBCI®

Edge
Excellence In Design
For Greater Efficiencies

EDGE Technical Updates

TECHNICAL UPDATES

EDGE User Guide – 2025 V.3



User Guides

When you select a green building measure from the EDGE software, you can open a tooltip for quick insight. For more in-depth information on sustainable construction strategies, connect to the user guides for the five green building types, which are also included here for easy access.



+ **2025 EDGE User Guide for all Building Types Version 3 - Applicable for projects registered from January 1st, 2025**

+ **2025 EDGE User Guide Addenda and Forms**

+ **EDGE User Guide and Methodology Report for All Building Types Version 3 - Superseded, applicable for projects registered before January 1st, 2025**

+ **EDGE User Guide for All Building Types Version 2.1**

TECHNICAL UPDATES

EDGE User Guide – 2025 V.3

- 2025 EDGE User Guide for all Building Types Version 3 - Applicable for projects registered from January 1st, 2025

PART 1 - DOWNLOAD UPDATED EDGE V3 BUILDING CERTIFICATION GUIDE

PART 2 - DOWNLOAD UPDATED EDGE V3 DESIGN TAB USER GUIDE

PART 3 - DOWNLOAD UPDATED EDGE V3 ENERGY MEASURES GUIDE

PART 4 - DOWNLOAD UPDATED EDGE V3 WATER MEASURES GUIDE

PART 5 - DOWNLOAD UPDATED V3 MATERIAL MEASURES GUIDE

PART 8 - DOWNLOAD EDGE V3 AUDITOR GUIDANCE

- ✓ Projects registered on or after 1/1/2025
- ✓ Projects registered prior to 1/1/2025 under EDGE v3.1
- ✓ 2025 EDGE User Guide is EDGE App “version-agnostic” and serves as an improved source of information
- ✓ The 2025 EDGE User Guide includes green building “best practices”

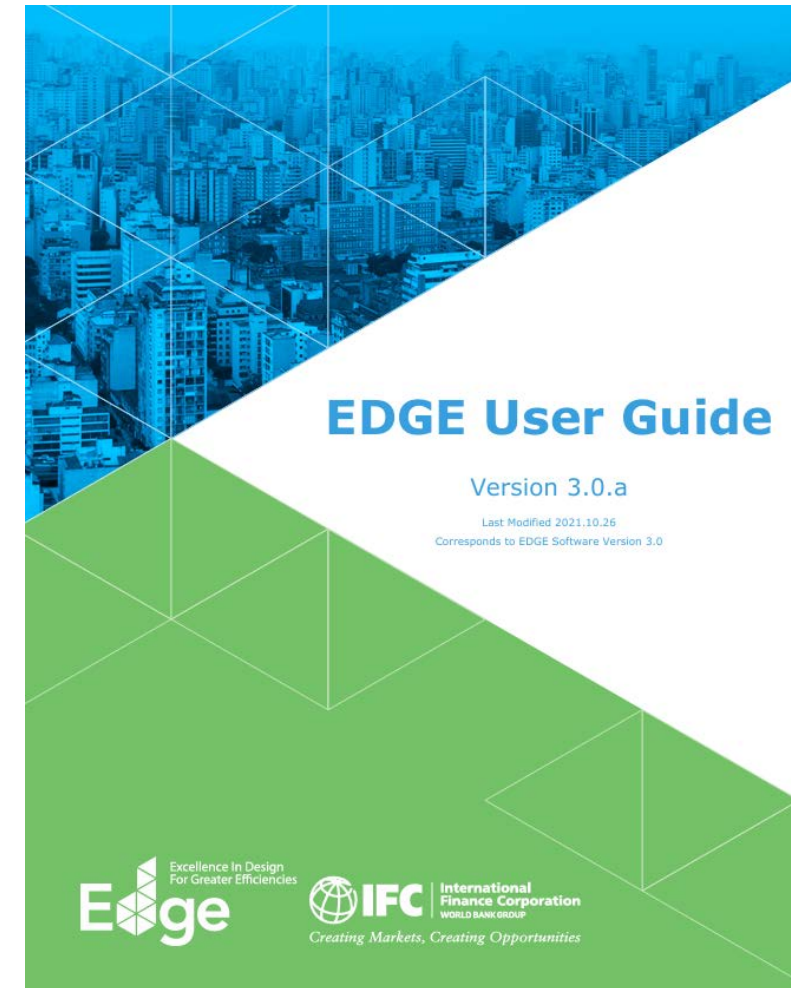
<https://edgebuildings.com/resources/user-documents/>

TECHNICAL UPDATES

EDGE User Guide – V3.0.a

- ✓ Projects registered prior to 1/1/2025
- ✓ In effect until EDGE App V3.0 sunsets
- ✓ Projects under EDGE User Guide version 3.0.a can reference the 2025 EDGE User Guide

<https://edgebuildings.com/resources/user-documents/>

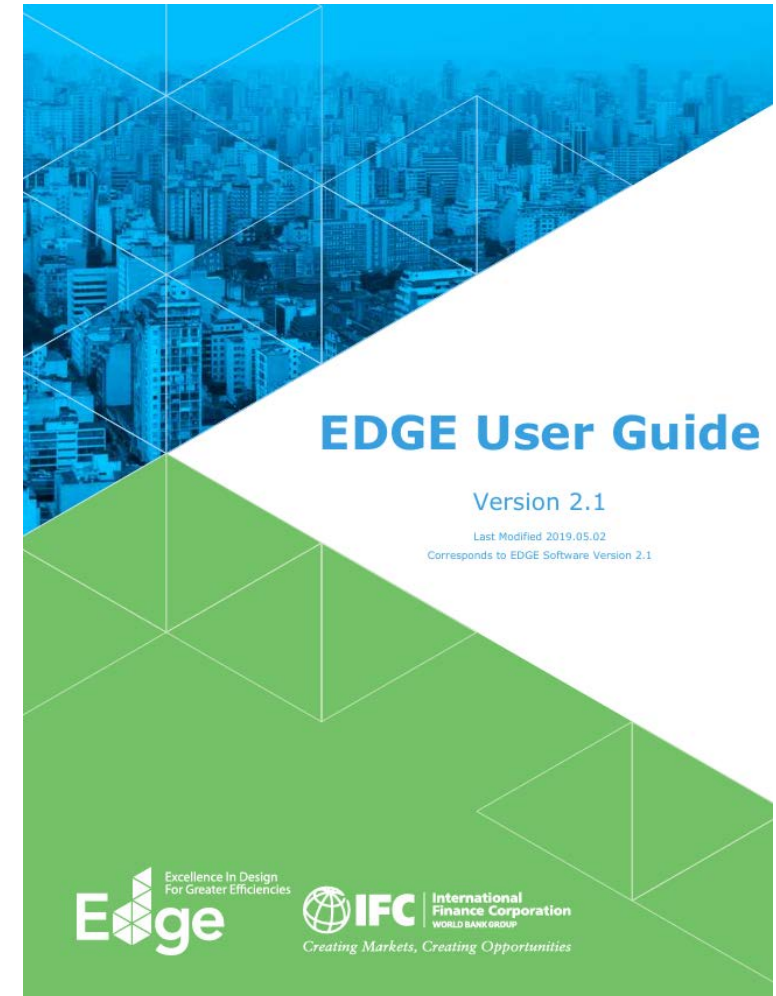


TECHNICAL UPDATES

EDGE User Guide – V2.1

- ✓ Projects registered under EDGE V2.1.5
- ✓ In effect until EDGE App V2.1.5 sunsets

<https://edgebuildings.com/resources/user-documents/>



GBC | GREEN
BUSINESS
CERTIFICATION
INC.™

TECHNICAL UPDATES

EDGE 2025 V3 - Part 8 Auditor Guidance

- ✓ Mandatory for projects registered on/after 1/1/2026
- ✓ Guidance for Auditors, outlines the requirements for assessing measures and performing Audits.

<https://edgebuildings.com/resources/user-documents/>



www.edgebuildings.com



Date of Release: June 30, 2025



TECHNICAL UPDATES

EDGE 2025 Portfolio Clustering Approach

- Clustering approached for Commercial projects introduced in January 2025
- Developed to standardize audits & reduce documentation review efforts
- Applicable to projects under same ownership and within a similar construction timeline
- EDGE 2025 User Guide, Part 1 - Annex 5: Portfolio Clustering Workflow

EDGE 2025 User Guide, Part 1 Addendum: EDGE Homes – Tract Housing Clustering Approach

- Clustering approached for Homes Typology construction introduced in April 2025
- Developed to simplify the certification process of Tract Housing portfolios
- Applicable to projects registered in V3.1 and onwards

TECHNICAL UPDATES

EDGE Building Eligibility

To be eligible to pursue EDGE Building Certification, a building must meet the Building Definition.

Building:

“Defined as a permanent and thermally conditioned construction with at least one full-time equivalent occupant, and a primary use that falls with the typologies available in the EDGE App. At minimum, a building shall include water provisions for occupants, lighting systems and a purposely designed thermal conditioning system consisting of active technical building systems and/or natural ventilation. All fossil fuels, electricity and water used during operations shall be measured or measurable.”

TECHNICAL UPDATES

EDGE Building Eligibility – Residential Subprojects

To be eligible to pursue EDGE Building Certification, Residential buildings must also meet the “*Minimum Water Fixtures*” criteria.

Minimum Water Fixtures for Residential Units

For residential units to be certifiable, units must include at least one installed fixture for:

- WEM01 Water-efficient Showerheads
- WEM02 Water-efficient Faucets for Bathrooms
- WEM04 Efficient Water Closets for Bathrooms
- WEM08 Water-efficient Faucets for Kitchen Sinks
- A penalty factor applies to percentage of uninstalled water fixtures

Example: WEM01 Water-efficient Showerheads

Consider the following subproject, which includes three units. Each unit contains three shower fixtures, making a total of nine fixtures. Out of these, six fixtures have been installed (indicated in blue), while three fixtures have not been installed (indicated in red).

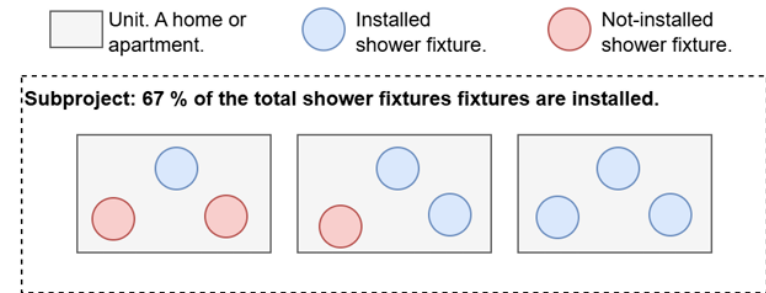


Table 2: Base case penalty value for Water Fixtures that are not included in home units.

% of fixtures not installed	Base Case Penalty Factor
0 < current % ≤ 10	1.1
10 < current % ≤ 20	1.15
20 < current % ≤ 30	1.20
30 < current % ≤ 40	1.28
40 < current % ≤ 50	1.38
current % > 50	1.53

TECHNICAL UPDATES

Multiple Building Grouping into a Single Subproject

- Projects with multiple similar/identical buildings within the Project boundary may use the project multiplier when creating their Subproject.
- When buildings are not similar but share certain characteristics, project teams must refer to the “**Multiple Building Grouping into a Single Subproject**” criteria in Part 1 of the user guide to determine the number of Subprojects for the entire EDGE Project.
- Larger groupings (i.e., > 50,000 m²) require special IFC approval.

TECHNICAL UPDATES

EDGE Zero Carbon Certification

- EDGE Advanced Certification or equivalent*
- Use 100% renewables on-site or off-site for energy or have purchased carbon offsets to reach 100%
- Updated list of eligible carbon offset providers; carbon offsets permitted only for commercial buildings.
 - GHC Emissions Mitigation Plan
- Residential buildings applying for ZC must requirements by procuring renewable energy and eliminating on-site emissions.
- EDGE Zero Carbon criteria now includes as reporting timeline for first-time certifications. EDGE ZC certification must start **within 6 months** of the last reporting month.

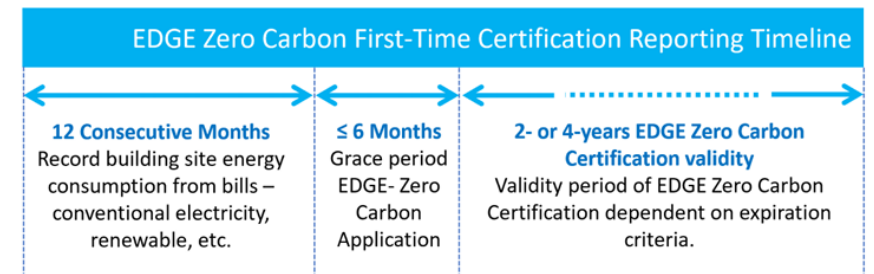


Figure 3. EDGE Zero Carbon timeline for first-time certification.

For example: If the reporting period is from July 2022 to June 2023 the limit to apply for Zero Carbon Certification by December is 2023.

TECHNICAL UPDATES

New mandatory efficiency measures

Measure EEM22 – Efficient Lighting for Internal Areas

EEM22 becomes mandatory ***“if internal lighting is provided in the building.”***

- A least 90% of the available lighting within the GIA must be reported
- In EDGE V3.1 the “*” has been added to indicate this is a mandatory measure; where no lighting is provided, project teams may report the base case value.

Measure EEM25 – Skylights

EEM25 becomes mandatory for Industrial buildings ***“if skylights are present in the building”***.

- Report the total skylight area (m²)

GBCI®

Edge
Excellence In Design
For Greater Efficiencies

REMINDERS

BOOKMARK: [HTTPS://EDGE.GBCI.ORG/EDGE-AUDITOR](https://edge.gbc.org/edge-auditor)



GBCI Auditors can audit projects in any countries included in the EDGE App except: Belarus, Colombia, Cuba, Iran, North Korea, Russia, Sudan, Syria, and the Crimea, Donetsk, Luhansk regions of Ukraine.



<https://edge.gbci.org/where-edge-certification-available-gbci>

MEETING YOUR EDGE CERTIFICATION DEADLINE

- **Share the certification process & project-specific timelines with your clients and their project teams.**
- **Ensure your client has realistic expectations and the entire project team plans well ahead of time to meet deadlines.**
- **Inform GBCI if you are aware of a project's certification deadline.**



<https://edge.gbci.org/meeting-your-edge-certification-deadline>

GENERAL DEADLINES

<https://edge.gbci.org/meeting-your-edge-certification-deadline>

- Share the certification process & project-specific timelines with your clients and their project teams.

SUBMIT FOR AUDIT



Project Team
Submits for Audit



SUBMIT FOR AUDIT



Project Team
Submits for Audit



EDGE Preliminary Audit Report



Year End Closures and Deadlines

[https://edge.gbci.org/deadlines-achieving-edge-certification-](https://edge.gbci.org/deadlines-achieving-edge-certification-2025)

[2025](https://edge.gbci.org/deadlines-achieving-edge-certification-2025)



**Trying to achieve EDGE Certification before
the end of the year?**

GBCI will be closed on these dates:

- Monday, September 1: Labor Day
- Tuesday, November 11: Veterans Day
- Thursday, November 27 – Friday, November 28: Thanksgiving
- Wednesday, December 25 – Friday, January 2: Winter Break

Year End Closures and Deadlines

<https://edge.gbci.org/deadlines-achieving-edge-certification-2025>

EDGE Project Teams

- To ensure preliminary or final EDGE certification in 2025, pay your certification fees and submit your project to your EDGE Auditors by **Oct. 24**.

EDGE Auditors

- To ensure preliminary or final EDGE certification in 2025, submit your initial audit comments to GBCI (if applicable) by **Oct. 31** and final comments/recommendations by **Nov. 21**.

EDGE VERSION – IMPORTANT DATES

EDGE V3.0 new project registration deadline is December 31, 2025

- Projects registered in v3.0 have 5-year period to complete final certification.

EDGE V2.1.5 Sunset Date is June 30, 2026

- Preliminary certificates become invalid.
- Projects registered in v2.1.5 must complete final certification prior to this date.
- Projects that do not meet this deadline will have to be re-registered/re-created in the latest EDGE App version



[IFC's EDGE Technical Update No. 41](#)

EDGE REMOTE AUDITS

End of Remote Audits – September 2024

- Auditors are now mandated to conduct at least one in-person visit to each project seeking certification.
- EDGE Certification providers can apply for an exemption from this requirement in cases of exceptional circumstances, such as safety issues.
- Remote follow-up inspections may still be permitted when considered essential and approved by EDGE Certification providers.
 - No new measures can be claimed in the remote follow up audit.
- Existing contracts between Auditors and Project Teams that include provisions for remote audits remain unaffected by this change.

EDGE AUDIT OF AUDITOR

GBCI EDGE Audit of Auditor

- Chapter 4 - Licensing Protocol for EDGE Auditors, Section 5.2 Audit of Auditors
- EDGE Certification Providers responsible for performing annual quality oversight of active Auditor's work
- Licensed Auditors that submitted Projects for EDGE Certification during the previous 2-year period are considered as "active"
- The GBCI EDGE Audit of Auditor includes a desktop review of the EDGE file and a site visit to the selected Project.
- Project sites from a random sample of Active Auditors (Interim & Approved).
- Auditor selection may also depend on Auditor's experience, Preliminary/Post Construction Audit results, number/type of queries.

REVIEW TIPS

Auditor Process Reminders

- Adhere to timelines noted in the EDGE Supplement to GBCI Assessor Manual; and notify GBCI if timeline is getting delayed
- Email GBCI the estimated date of submission to GBCI before beginning work on an audit
- Provide a Summary of Issues (SOI) and attach any relevant communications with team
- Interim Auditors provide SOI within the QC Template; Approved Auditors send via email.

Review comments in local language

- Comments in local language or a language that the client is familiar with can be entered
- Comments in English must also be included, QC Reviews will continue to happen in English.

REVIEW TIPS

New Auditors - Interim Approval Phase

- New Auditors will begin performing audits in the Interim Approval phase
- **Submit review comments for all stages to GBCI for QC** before sending them to the client until you graduate as an Approved Auditor.
- The GBCI Audit Comments QC template (Exhibit A) must be used to compile customer-ready review comments for GBCI QC.
- For Post-Construction stage audits, Interim Auditors must prepare and submit a Site Audit Checklist and sampling layout and/or list of units to audit (if applicable) to GBCI for QC **prior to performing the site visit**. The GBCI Site Audit Checklist Template (Exhibit B) or a self created template may be used.
- Interim Auditors are required to achieve and sustain an average QC score above 4.5 for both Design and Post-Construction Audits, to graduate from the Interim Auditor stage to Approved Auditor stage.

REVIEW TIPS

Audit comments stock text

Approved measures

If a measure is approved based on the documentation provided, use this text.



Stock text:

Approved.

The xxx, yyy, and zzz, have been provided. The documentation demonstrates compliance.

Note: List all documents and information provided to confirm compliance.

Rejected measures

If a measure is rejected and additional clarifications are needed, use this text (make sure each issue is listed separately and detailed):



Stock text

1. The xxx has been provided but yyy is missing. Please provide zzz.

2. The xxx has been provided but yyy is missing. Please provide zzz

Note: List the issue, why it is an issue and then provide specific action for the project team.

Previously approved measures

If a measure was previously approved in the initial review, use this text



Stock text:

Approved.

Previously approved.

REVIEW TIPS

Tips for Auditors:

- If a required document is missing, but compliance can be determined then you may approve the measure and include an educational note for the project team for future projects.
- Whenever an issue is found, evaluate the impact on savings by unselecting the measure or updating the value reported.
- If the impact to savings from an inconsistency is slight (less than 0.5%) and the 20% threshold for each of the performance categories is not impacted, the measure may be approved with an educational note.
- To perform checks for impact on savings, please ensure to use a “Save-as” functionality.
- Follow the GBCI Audit comment structure in all instances. Note the comments should be clear, concise, specific about inconsistency, and actionable.

REVIEW TIPS

Rejecting a file

- To Reject or Send a file back to the project team, at least one measure must be rejected.
- For issues only related to the Design Page, reject any one measure asking the team to refer to the Design Page comments.
- When notifying project teams, we advise using “returned” instead of “rejected”. This is to avoid project teams interpreting 'rejection' as a final decision.

REVIEW TIPS

Special Ruling Request

- A Special Ruling Request (SRR) is a mechanism for project development teams to request a Special Ruling from the Certifier on the eligibility of a method or procedure not outlined in the EDGE App
- Raise a Special Ruling Request if you believe your project has more savings than what EDGE is calculating, or you feel that we are not capturing the real efficiency of the project.
- Note that the SRR can be submitted only after a project has been registered and before the project has been formally submitted for the relevant (Preliminary or Post-Construction) certification.
- SRR must be requested directly from IFC.

REVIEW TIPS

Project Details for Certification Confirmation

Confirm the following with the project team:

- Single Project/Subproject names can be no longer than 150 characters.
- Residential Unit names, can be no longer than 20 characters.
- Owner/Organization name
- Project Address



GBCI®

Edge
Excellence In Design
For Greater Efficiencies

RESOURCES



REFERENCE DOCUMENTS

GBCI Assessor Manual

- Outlines policies and protocols
- Establishes the expectations, conduct and quality assurance

EDGE Supplement to GBCI Assessor Manual

- Timeline expectations
- Instructions to complete a Design Audit and a Post-Construction Audit

EDGE APP – RESOURCES

✓ Measure descriptions

- Efficiency measure descriptions have been updated in the EDGE App.

<input type="checkbox"/>	EEM01* Window-to-Wall Ratio: 8%
<input type="checkbox"/>	EEM02 Reflective Roof: Solar Reflectance Index 85
<input type="checkbox"/>	EEM03 Reflective Exterior Walls: Solar Reflectance Index 85
<input type="checkbox"/>	EEM04 External Shading Devices: Annual Average Shading Factor (AASF) 0.27
<input type="checkbox"/>	EEM05* Insulation of Roof: U-value 0.19 W/m ² ·K
<input type="checkbox"/>	EEM06* Insulation of Ground/Raised Floor Slab: U-Value 0.35 W/m ² ·K
<input type="checkbox"/>	EEM07 Green Roof

×

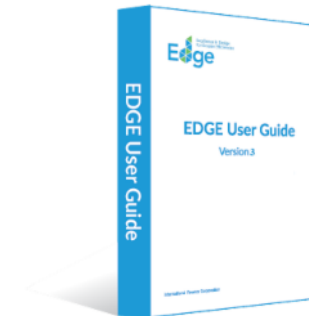
Energy Efficiency Measures

Window-to-Wall Ratio: 8%

The Window to Wall Ratio (WWR) represents the ratio of the total window area to the total wall area of the building's envelope, i.e. the external layer that separates the thermally conditioned indoor spaces from the exterior.

For home typologies, the WWR refers to the weighted average unit. If detailed wall and glazing details for each orientation are available, the user shall use the detailed entry calculator to input this information.

Walls and glazing areas of all applicable orientations must be entered when the detailed entry calculator is used, if some fields are left blank the tool considers that façade area with default values. The calculator must be used in EDGE when the project team submits for certification.



EDGE BUILDINGS ONLINE – RESOURCES

✓ EDGE “Known Issues” page

- Lists current known issues with the EDGE App
- Measures impacted
- Workaround solutions



Known Issues

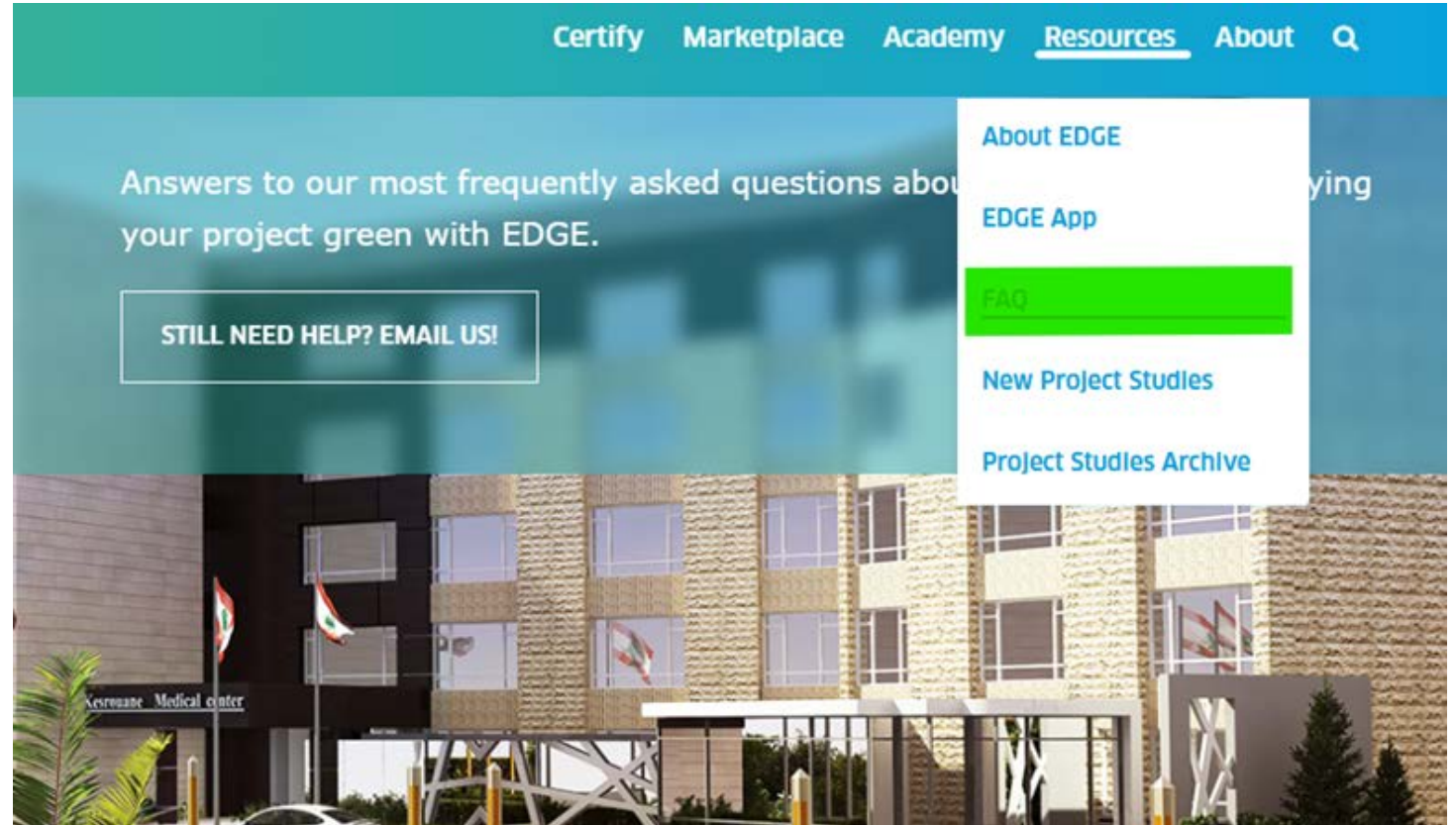
Issue	Version impacted	Typology Affected	Measure / feature involved	Description	Workaround	Status	Comments
EEM11 Efficient cooling system 2 calculation	3.0	All	EEM13	The improved case does not reflect the capacity installed in chiller system 2.	Project teams shall avoid using Type 2 systems, by providing 0 in capacity and efficiency. Then use Type 3 where needed.	Open	Type 2 will be blocked for version 3.0. Fixed in V 3.1.
EEM06 Insulation of Ground/Raised Floor Slab for unconditioned basements	3.0, 3.1	All	EEM06, MEM01	The EDGE calculator can only model the heat transfer of slabs on ground for conditioned spaces.	Project teams shall use base case value when the basement is thermally unconditioned. The actual U value shall be used for conditioned or partially conditioned spaces. The definition of bottom floor construction in MEM01 remains unchanged.	Open	Future versions will provide additional basement modelling capabilities for heat transfer from the ground.

<https://edgebuildings.com/edge-app-known-issues/>

EDGE BUILDINGS ONLINE – RESOURCES

✓ FAQ page

- General queries
- EDGE V3.1
- Building Science
- EDGE Faculty
- Certification
- Technical items



<https://edgebuildings.com/frequently-asked-questions/>

GBCI®

Edge
Excellence In Design
For Greater Efficiencies

FAQs

Can I upgrade an EDGE V3.0 Subproject to EDGE V3.1?

Yes, project teams may choose to upgrade their EDGE Project to the newest EDGE App version.

- As of now, there is no automatic method to convert an EDGE Subproject from a previous version to version 3.1.
- The project must be created again in the new EDGE App version and re-registered.
- Reach out to GBCI for guidance where previously registered EDGE projects need to be upgraded to the latest version.

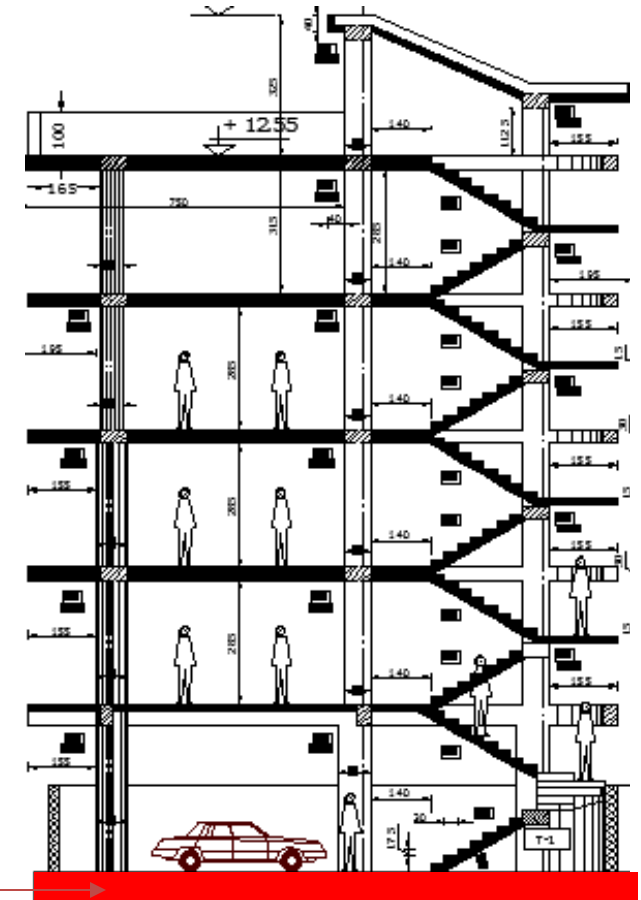
Can Auditors carry out more than 2 audit rounds?

- The standard audit process should involve 2 rounds of review. However, Auditors may perform as many audits as necessary to ensure the project team is demonstrating compliance with all measures.
- Consider including charged for additional review rounds in your contract.
- The Audit cycle and Review cycle count is indicated in EDGE App User's Dashboard.

Which slab should be reported for MEM01 Bottom Floor Construction?

MEM01 Bottom Floor Construction:

- Report the material, thickness, and steel rebar of the lowermost floor slab in the Subproject, even if it corresponds to a basement parking area floor slab.



Bottom Floor Construction

A rooftop in a commercial project includes an area of open covered terrace space, should the project team report the terrace roof portion under EEM05?

No, under measure EEM05, the project team should only report the roof area separating the thermally conditioned space from the exterior and where the heat transfer will occur.

In this same scenario, can the project team claim the terrace roof material under EEM02?

If the terrace roof covering is a permanent structure, the project team can include this roof material under measure EEM02 and report the material's SRI.

Do I include the air gap as part of the glazing thickness in double or triple glazed windows?

MEM08 Window Glazing:

- Select “Double Glazing” from dropdown menu.
- Report the report the total thickness of the glazing without including the air gap(s).

Table 9: Examples of glazing selection and thicknesses for various glazing configurations.

Diagram	Glazing Selection	Thickness
	Single Glazing	Thickness A
	Single Glazing	Thickness A + Thickness B
	Double Glazing	Thickness A + Thickness B

Note: A combination of laminated glazing, air layer, and a single sheet of glass counts as double glazing.

10 mm
15 mm
10 mm

MEM08* **Window Glazing** ⋮

Base Case Material: Single Glazing

Thickness : 8mm

Type 1

Double Glazing ▼

Proportion %	Thickness (mm)	U-Value (W/m ² ·K)	Embodied Carbon (kg/...
100	20	1.95	

Can I report the air gap areas of roof or wall assemblies?

Yes, however, air gaps larger than 100mm must not be entered in the EDGE App.

For measure EEM09, does the project team need to include the window frame and glazing to calculate U-value?

No, EDGE only considers the U-value of the glass without the window frame. Project teams should report the U-value of the glass only. The U-value of the window frame will be reflected in measure MEM07 once the material has been reported.

A residential project is only providing the infrastructure for future installation of water heaters, water heaters will be installed by tenants. How should this be reflected in the EDGE file?

Design tab:

- In the “Fuel Usage” section of the design tab, the project team should select the type of fuel being provided for “Hot Water”.

Measure EEM18 DHW System inputs:

- Under measure EEM18, the project team must report the same system type and efficiency as the base case.
- For EDGE V3.0 report:
 - For natural gas infrastructure: 100% Boiler with an 80% efficiency.
 - For electricity infrastructure: 100% Heat Pump with a COP of 1.
- EDGE V3.1:
 - Report the base case as indicated in the EDGE app since the efficiency of the base case DHW system does not depend on the fuel selection in the design tab.

I am auditing a Preliminary stage project, and a declaration letter has been submitted for some measures, is this allowed under the new user guide?

While the EDGE User Guide states that project teams can submit a signed declaration of intent *if* the required evidence is not available at the design stage, basic building design details must be provided at the Design Stage. Declaration letters will not apply to some measures in which specifications must be provided such as EEM04, EEM13, EEM22, EEM23, EEM13, etc.

- Part 8 of the 2025 EDGE User Guide provides detailed guidance on minimum documentation requirements for Preliminary Stage Audits.

In Residential new projects, should we include water fixtures of common areas on water measures, as faucets and showerheads of multipurpose function rooms?

Yes, Auditors must sample, and test installed water fixtures in common areas.

- The formula of **square root of the number of fixtures plus one (sq. root n +1)** can be applied to common areas.
- Water fixtures must be randomly selected.
- In EDGE V3.1, project teams should report the number of fixtures and average flow rates in the calculator. The common area fixtures can be reported as a secondary Type and the software will calculate the weighted average flow rate automatically.
- For EDGE V3.0, project teams should perform external calculations to obtain the weighted average flow rate including fixtures in units & common areas.

How to input AASF in buildings when more than 3 types per orientation are present?

In projects where more than three types of AASF exist, project teams can group the window types per orientation and calculate the weighted average per window area and report this in the EEM04 calculator.

An existing industrial project has skylights, but the Owner did not install automatic lighting controls. Do they need to install daylight controls to select the EEM25 measure?

Since measure EEM25 is mandatory for Industrial buildings where skylights are present, the measure must be selected. However, it is not mandatory to install daylighting controls. In the EEM25 calculator, the project team must set the *visual transmission* factor to “0”.

If purchase receipts are not available for existing buildings, can we provide alternate documentation?

- Alternate supporting documentation is acceptable for existing building projects.
- The latest version of the EDGE User Guide includes an “Existing Building Documentation” in the Compliance Guidance section under each measure.
- Alternate documentation to demonstrate proof of installation may include existing building drawings, photographs of materials during installation, and/or other evidence.
- Additionally, the EDGE User Guide includes guidance on how to report certain building construction elements such as wall thickness when the details are not available.

Under measure EEM09, what is the total glazing area that should be reported?

EEM09 Window Glazing:

- **Report 100% glazing area for each orientation.**
- Glazing area can also be reported by % for “All Orientations” if the type of glass is not the same for a specific orientation.
- **The % of glazing reported is not associated with measure EEM01.**

EEM09 - Efficiency of Glass Calculator

Glazing Type	% of Total Glazing Area	Orientation	U-value (W/m ² ·K)	SHGC	VT (Factor)	Note
Type 1	100	North	5.7	0.31	0.7	
Type 2	100	East	3.0	0.21	0.7	✖
Type 3	100	West	5.7	0.31	0.7	✖
Type 4	100	South	3.0	0.21	0.7	✖

+ ADD NEW TYPE

U-value (W/m²·K) 3.15

SHGC 0.38

VT (Factor) 0.58

Under measure EEM08, what is the total wall area that should be reported?

EEM08 Insulation of Exterior Walls:

- Report 100% exterior area for each orientation.
- The % of wall area reported is not associated with measure EEM01.
- Under U-Value Summary, remaining Wall Area (%) should be 0% for all orientations.

U-Value Summary

Orientation	Type 1 Wall Area(%)	Type 2 Wall Area(%)	Remaining Wall Area(%)	Type 1 Wall U-value (W/m ² ·K)
North East	20%	80%	0%	5.39
South East	20%	80%	0%	5.39
South West	20%	80%	0%	5.39
North West	20%	80%	0%	5.39

Under measure EEM11, do all spaces need to comply with Natural Ventilation?

EEM11 Natural Ventilation:

- Select compliant spaces and report % Opening of Façade (openable area/wall area).
- Select “No” for all other spaces.

Calculator

EEM11 - Natural Ventilation Calculator



Functional Areas	Is the Area Naturally Ventilated?	% Opening of Façade	Ventilation Type
Office Space	Yes	15	Single Sided
Receiving Area	No		Single Sided
Shipping Area	No		Single Sided
Production Area	Yes	12	Single Sided
Inventory Area	No		Single Sided
Kitchen & Food Preparation	Yes	8	Cross Flow

Under measure EEM12, do all spaces need to comply with Ceiling Fans?

EEM12 Ceiling Fans:

- Select compliant spaces and report Ceiling Fan Area (%).
- Select “No” for all other spaces.

EEM12 - Ceiling fans Calculator

Functional Areas	Does The Area Has Ceiling Fan?	Default Ceiling Fan Area (%)	User Entry Ceiling Fan Area (%)
Office Space	<input type="text" value="No"/>	70	<input type="text"/>
Receiving Area	<input type="text" value="No"/>	70	<input type="text"/>
Shipping Area	<input type="text" value="No"/>	70	<input type="text"/>
Production Area	<input type="text" value="Yes"/>	70	<input type="text" value="20"/>
Inventory Area	<input type="text" value="No"/>	70	<input type="text"/>
Kitchen & Food Preparation	<input type="text" value="No"/>	70	<input type="text"/>

Under measure EEM24, do all spaces need to comply with Lighting Controls?

EEM24 Lighting Controls:

- Select compliant spaces Under Occupancy Sensors and Daylight Sensors.
- Select “No” for all other spaces.

Lighting Control with Occupancy Sensors

Functional Areas	Default Improved Case Areas with Occupancy Sensors	User Entry Improved Case Areas With Occupancy Sensors
Office Space	Yes	Yes
Receiving Area	Yes	No
Shipping Area	Yes	No

Lighting Control With Daylight Sensors

Functional Areas	Default Improved Case Areas with Daylight Sensors	User Entry Improved Case Areas With Daylight Sensors
Office Space	Yes	No
Receiving Area	Yes	Yes



LIVE Q&A

Contact GBCI

Project Teams : edge@gbci.org

- Registration and certification
- Auditor process

Auditors: edgeauditor@gbci.org

- Project-specific technical questions
- Audit communications
- EDGE Auditor Performance questions/feedback

Contact IFC

edge@ifc.org

- EDGE Software and underlying data
 - Bug reporting
 - Feedback
 - Requests for localization updates
 - Additional measures, materials, cities, building typologies, general technical queries, etc.
- Special Ruling Requests (SRR) and Remote Audit Requests
- User Guides, Methodology Report, and other EDGE resource feedback
- EDGE Exam
- EDGE Experts an EDGE Faculty Program



THANK YOU!